

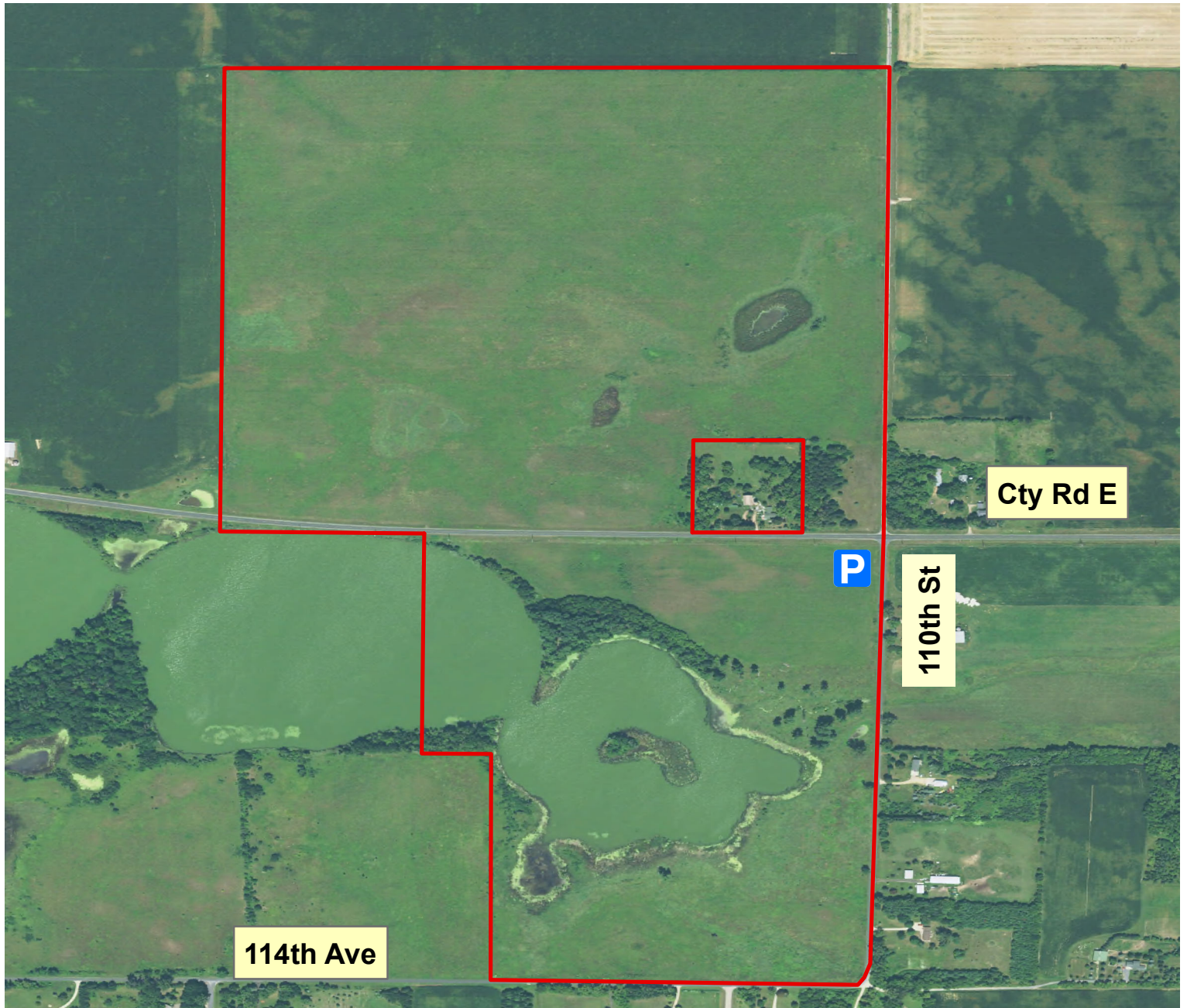


# U.S. Fish and Wildlife Service

## St. Croix Wetland Management District

Three Lakes WPA

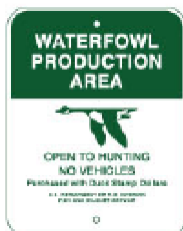
Acres: 249



### PARKING LOT LOCATION

1188 110th St  
New Richmond, WI

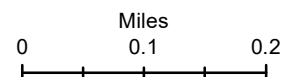
St. Croix County  
T29N-18W, Sec5 & T30N-R18W, Sec32



Parking Lot



WPA Boundary



You can find additional information at:  
([https://www.fws.gov/refuge/St\\_Croix\\_WMD/](https://www.fws.gov/refuge/St_Croix_WMD/)) or call (715-246-7784).  
Boundaries shown are approximate only. Please adhere to all posted signs.